

March 2019 | Vol. 6 | Issue 59 | ₹200

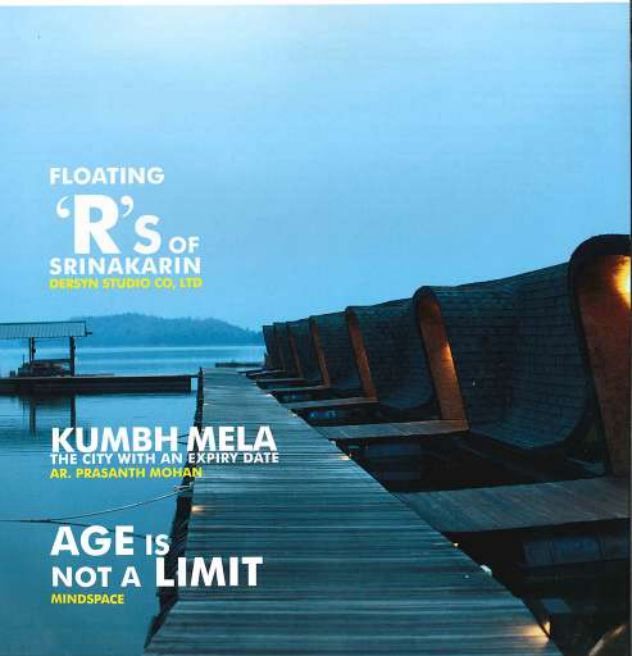
DESIGN  
**detail**  
the architecture magazine

FLOATING

**'R's** OF  
SRINAKARIN  
DEBSYN STUDIO CO, LTD

**KUMBH MELA**  
THE CITY WITH AN EXPIRY DATE  
AR. PRASANTH MOHAN

**AGE IS  
NOT A LIMIT**  
MINDSPACE





## IN THE LIGHTNESS OF FAMILIARITY

Text: Akiba Fathima / Photos: Studio Apostel

**T**he medical spa in Lijiang, Yunnan, China, designed by Alberto Apostel stands out for bringing tradition and the avant garde together. The project gives a unique experience to the user, due to the stark difference between the earthy traditional exterior since it is a repurposed building and futuristic interiors.

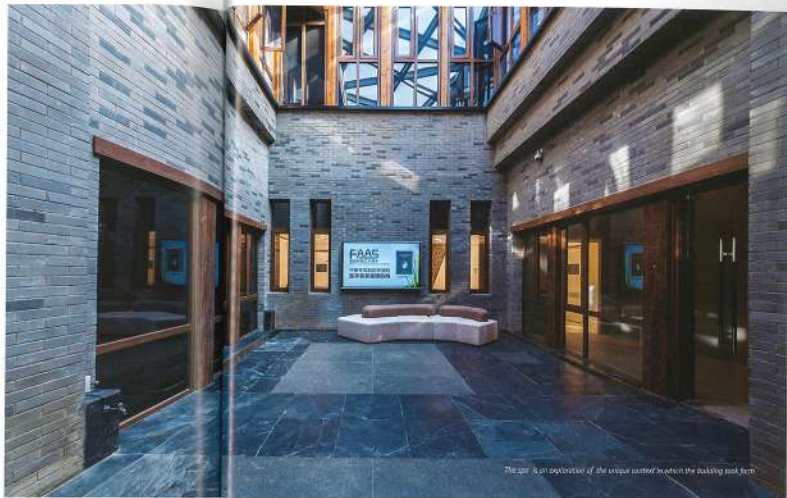
The concept for the design of the building came from the different aspects of the context, considering many things, like the Yunnan province, famous for its well preserved traditional buildings, the Taoist culture, where equilibrium is represented by Yin and Yang, two seemingly contrasting dualities and finally, the purpose of the building, which is an anti-ageing centre which houses state of the art stem cell technology and research. The design scheme of the interiors is thus based on symbolism derived from the unique context.



ALBERTO APOSTOLI

## ALBERTO APOSTOLI

Alberto Apostoli is a multidisciplinary design firm comprising of 50 professionals that combines architecture, engineering, interior design and product design to offer a holistic and harmonious service. The firm was founded by Alberto Apostoli in 1997 in Verona, Italy. The firm seeks to offer quality design through the effective dialogues between multiple disciplines all encompassed in a single roof. The firm offers these services through its sister brands, Apostoli Engineering and Studio Apostoli & Associati project management. It also provides some additional services such as Brand Design, Cost Control, Procurement, Integrated Communication, R & D, Business Planning, Due Diligence and Energy Management. The firm has projects far and wide with an array of international clientele and are known for their expertise and specialisation in the wellness sector.



The roof is an expression of the unique context in which the building took form.

Views of light onto polished the wall and ceiling surfaces.



### FACT FILE

PROJECT TITLE	FAAG MEDICAL SPA & ANTI-AGEING CENTER
PROJECT LOCATION	LEKANG, KUNMING, CHINA
TYPOLOGY	HOSPITALITY & WELLNESS
PRINCIPAL ARCHITECT	ALBERTO APOSTOLI
YEAR	2018
AREA	1,800 SQ. M
PROJECT MANAGER	MARTINA NEGRO



The light embraces these surfaces to impart an aware, gentle ambience to the spaces.

The facility combines the medical treatment with the luxury of a spa. This is another factor that has to be imbued into the design. It should be a medical building but if the interiors look too bland and sterile, it won't have a spa ambience, and it may not be welcoming to the upper class clientele who are expected to use such high-end treatment for cosmetic purposes. So the architects took care from the transformation element of the stem cell. The organic elements are filtered into the interior, where they lose their definition becoming a grid of material and luminous connections. The luminous stripes of light continue on all the surfaces giving an impression of transcendence from a mere three dimensional sense of being. It gives the client a strong introduction to the service the facility provides. This thread lighting



The rustic aspect of the exterior and the futuristic feel of the interiors are symbols of the duality of the job and young concept

has ubiquitous presence throughout the interiors. In the first floor they have been excluded from the floor.

The interiors are glimpsed through the stained glass at the entrance that makes way for a grid element inside that lends character to the space and camouflages load-bearing columns. Perforated panels with designs that are inspired from the cell and cell structure are also present in the lobby.

The architects have considered the mental state of the users as well. Since this is a cosmetic clinic, the medical interventions would have been requested by the clients. The patients need a reassuring and trustworthy environment. The lighting in the interiors helps to create a sense of transparency inside, especially in the underground levels where natural light cannot pierce through. In addition, all lighting fixtures are connected to a central control with DALI interface. This helps to slowly change the lighting intensity and colour according to

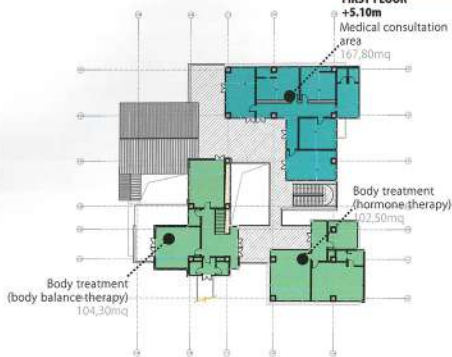


The DALI controls the ambiance of a cosmetic clinic and spa.

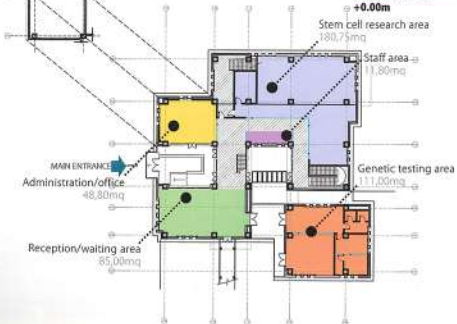


The perforated screens and grids of light are symbols of duality of job and concept.

## FUNCTIONS FIRST FLOOR



## FUNCTIONS GROUND FLOOR



the passage of the day. Therefore the facility will have colder light around midday (5,400 K) and a warmer light at night (2,700), with an intensity setting from 100% daytime down to 20% in the evening hours. This will help the lighting to be in sync with that of the exterior and it will have a calming effect on the guest's psyche.

The traditional exterior of the building and landscaping also play a part in creating the ambience. Natural elements such as dry gardens and water fountains help the guests feel to a connection with nature. The building combines extremely contrasting design choices to produce a solution that still harmonises due to its careful detailing and insight from the part of the designers.